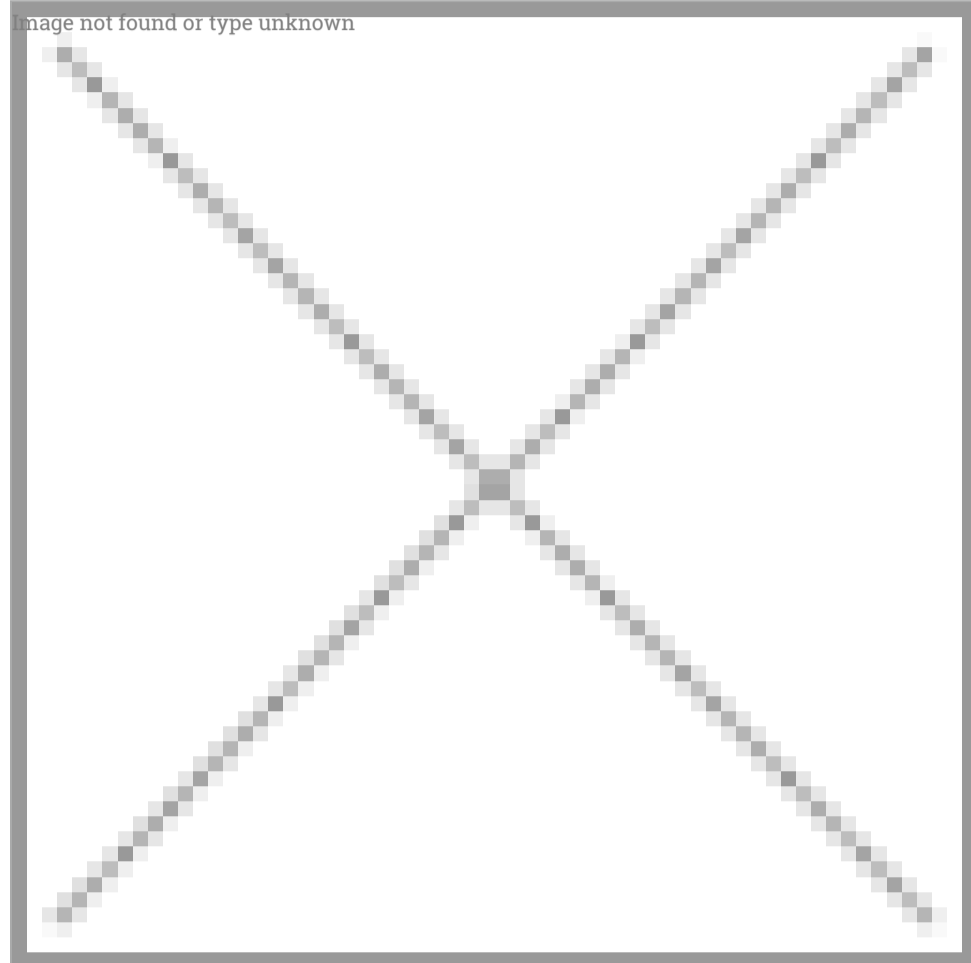


Steel 3way tipper



Code	Boards	External Dimensions
M 155 022 453 - M30	Double wall TR30 reinforced aluminium	3800x2300 mm

- Aluminium sideboards from 500 mm top opening only
- Aluminium tailgate from 500 mm with double opening and automatic release

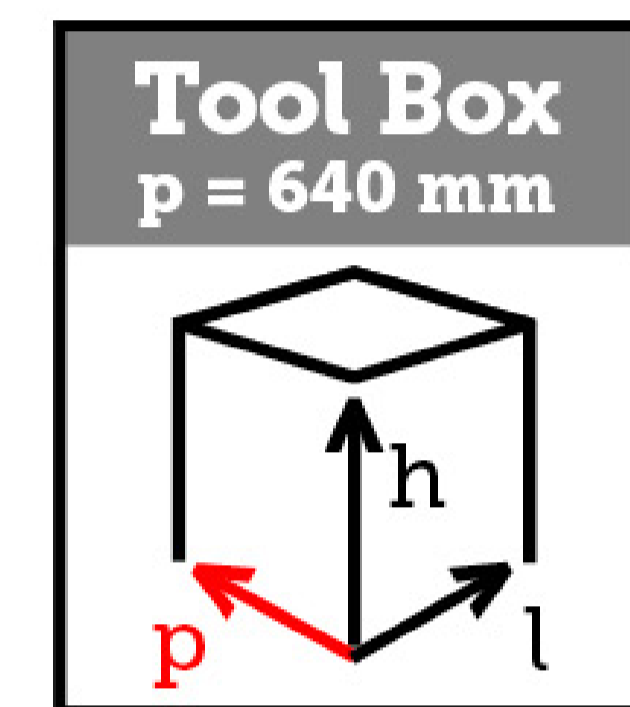


- Loading deck structure in S355JR steel th. 4 mm
- Steel subframe with horizontal spheres
- Steel front board from 500 mm with ladder rack and perforated protection panel
- Side and rear boards from 500 mm in aluminium
- Front and rear pillars screwed and removable with integrated foldaway
- Recessed foldway rope stretching ring (4+4)
- Removable rear ladder rack
- Steel spheres supports with anti-vibration PVC cap
- Thermoplastic mudguards
- Tool box
- Homologated side guards
- 2 KGS powder fire extinguisher
- Hydraulic system with P.T.O., safety fuse and buzzer
- Chromed and galvanised multistage under floor ram, wear resistant, weather resistant and rust resistant with safety valve
- Cataphoresis treatment and powder coating
- Lights and tables according to regulations

NOTE: The information and images - including the colors of the products - concerning equipment, external appearance, measurements, etc. are to be considered purely indicative and in no way binding. TITAN reserves the right to change features, specifications, data, prices without notice. The prices indicated on the Site are in no way binding for contractual purposes and may vary according to the duration of the price list. Prices are always VAT free. For updated and punctual information on products and prices, TITAN invites users to contact its sales network.

Steel 3way tipper with retrocab storage box

H. 1200 mm



Code	Boards	External Dimensions
M 155 022 576 - M30	Double wall TR30 reinforced aluminium	3800x2300 mm

Aluminium sideboards from 500 mm top opening only

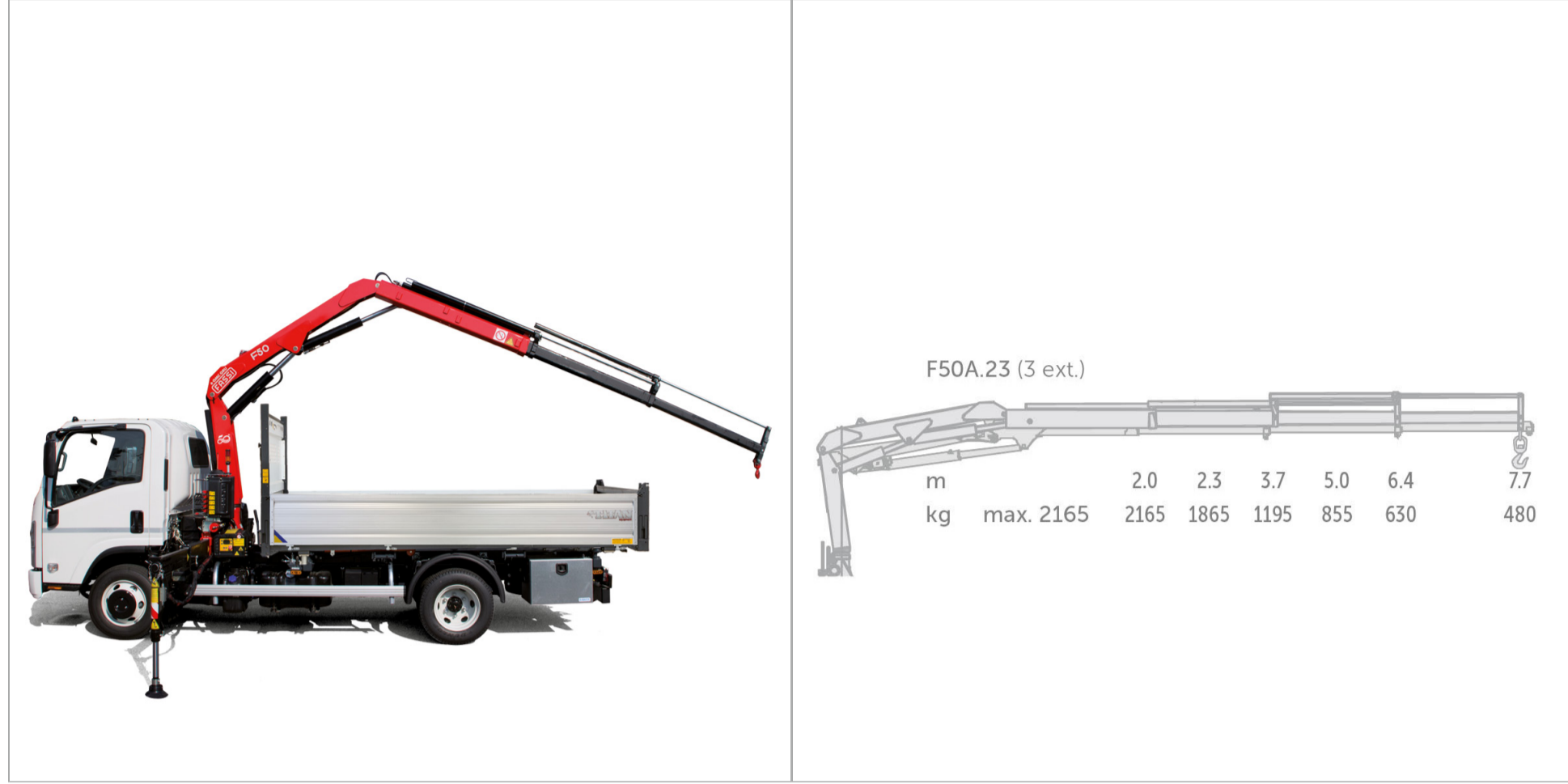
Aluminium tailgate from 500 mm with double opening and automatic release

- Loading deck structure in S355JR steel th. 4 mm
- Steel subframe with horizontal spheres
- Steel front board from 500 mm with ladder rack and perforated protection panel
- Side and rear boards from 500 mm in aluminium
- Front and rear pillars screwed and removable with integrated foldaway
- Recessed foldway rope stretching ring (4+4)
- Removable rear ladder rack
- Steel spheres supports with anti-vibration PVC cap
- Thermoplastic mudguards
- Tool box
- Homologated side guards
- 2 KGS powder fire extinguisher
- Hydraulic system with P.T.O., safety fuse and buzzer
- Chromed and galvanised multistage under floor ram, wear resistant, weather resistant and rust resistant with safety valve
- Cataphoresis treatment and powder coating
- Lights and tables according to regulations

Supply and Mounting of retrocab storage box ext. dimensions 640x1200x1950 mm of 2 mm width steel, painted with epoxy powder white ISUZU colour, plastic internal mat, aluminium hinges, central shelf bracket, double opening, locks euroinox.



Steel 3way tipper with FASSI F50A.0.23 crane



Code	Boards	External Dimensions
M 155 023 412 - M30	Double wall TR30 reinforced aluminium	3800x2300 mm

Aluminium sideboards from 500 mm top opening only

Aluminium tailgate from 500 mm with double opening and automatic release



- Loading deck structure in S355JR steel th. 4 mm
- Steel subframe with horizontal spheres
- Steel front board from 500 mm with ladder rack and perforated protection panel
- Side and rear boards from 500 mm in aluminium
- Front and rear pillars screwed and removable with integrated foldaway
- Recessed foldway rope stretching ring (4+4)
- Removable rear ladder rack
- Steel spheres supports with anti-vibration PVC cap
- Thermoplastic mudguards
- Tool box
- Homologated side guards
- 2 KGS powder fire extinguisher
- Hydraulic system with P.T.O., safety fuse and buzzer
- Chromed and galvanised multistage under floor ram, wear resistant, weather resistant and rust resistant with safety valve
- Cataphoresis treatment and powder coating
- Lights and tables according to regulations
- Supply and mounting of FASSI F50A.O.23 crane (3 hydraulic extensions)**

NOTE: The information and images - including the colors of the products - concerning equipment, external appearance, measurements, etc. are to be considered purely indicative and in no way binding. TITAN reserves the right to change features, specifications, data, prices without notice. The prices indicated on the Site are in no way binding for contractual purposes and may vary according to the duration of the price list. Prices are always VAT free. For updated and punctual information on products and prices, TITAN invites users to contact its sales network.



Steel rear tipper

Code	Boards	External Dimensions
M 155 025 410 - M30*	Fratted steel	3800x2300 mm

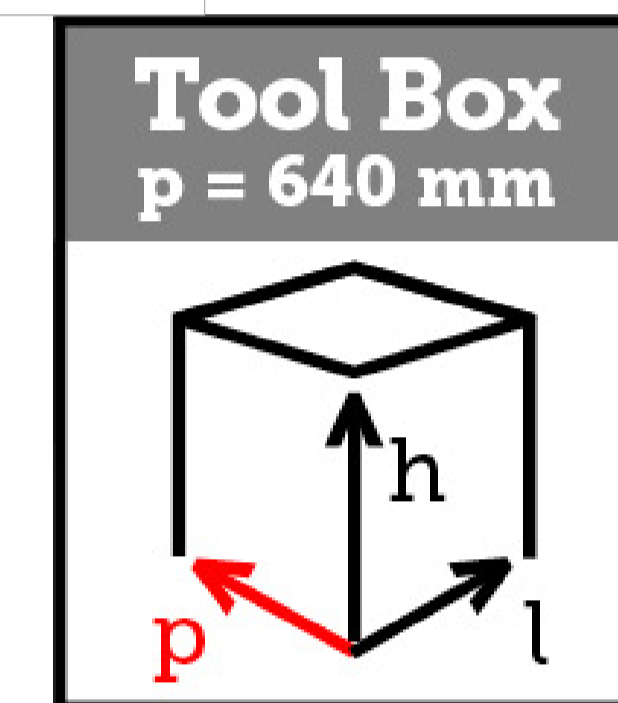
Steel sideboards from 500 mm top opening only

Steel tailgate from 500 mm with double opening and automatic release

- Loading deck structure in S355JR steel th. 4 mm
- Steel subframe
- Steel front board from 500 mm with ladder rack and perforated protection panel
- Steel Side and rear boards from 500 mm
- Front and rear pillars screwed and removable with integrated foldaway
- Recessed foldway rope stretching ring (4+4)
- Removable rear ladder rack
- Thermoplastic mudguards
- Tool box
- Homologated side guards
- 2 KGS powder fire extinguisher
- 2 wheel stop wedges with support
- Hydraulic system with P.T.O., safety fuse and buzzer
- Chromed and galvanised multistage under floor ram, wear resistant, weather resistant and rust resistant with safety valve
- Cataphoresis treatment and powder coating
- Lights and tables according to regulations
- * Available while stocks last

NOTE: The information and images - including the colors of the products - concerning equipment, external appearance, measurements, etc. are to be considered purely indicative and in no way binding. TITAN reserves the right to change features, specifications, data, prices without notice. The prices indicated on the Site are in no way binding for contractual purposes and may vary according to the duration of the price list. Prices are always VAT free. For updated and punctual information on products and prices, TITAN invites users to contact its sales network.

Steel rear tipper with retrocab storage box H. 1200 mm



Code	Boards	External Dimensions
M 155 025 462 - M30*	Fratted steel	3800x2300 mm

Steel sideboards from 500 mm top opening only

Steel tailgate from 500 mm with double opening and automatic release

- Loading deck structure in S355JR steel th. 4 mm
- Steel subframe
- Steel front board from 500 mm with ladder rack and perforated protection panel
- Steel Side and rear boards from 500 mm
- Front and rear pillars screwed and removable with integrated foldaway
- Recessed foldway rope stretching ring (4+4)
- Removable rear ladder rack
- Thermoplastic mudguards
- Tool box
- Homologated side guards
- 2 KGS powder fire extinguisher
- 2 wheel stop wedges with support
- Hydraulic system with P.T.O., safety fuse and buzzer
- Chromed and galvanised multistage under floor ram, wear resistant, weather resistant and rust resistant with safety valve
- Cataphoresis treatment and powder coating
- Lights and tables according to regulations

Supply and Mounting of retrocab storage box ext. dimensions 640x1200x1950 mm of 2 mm width steel, painted with epoxy powder white ISUZU colour, plastic internal mat, aluminium hinges, central shelf bracket, double opening, locks euroinox.

*** Available while stocks last**



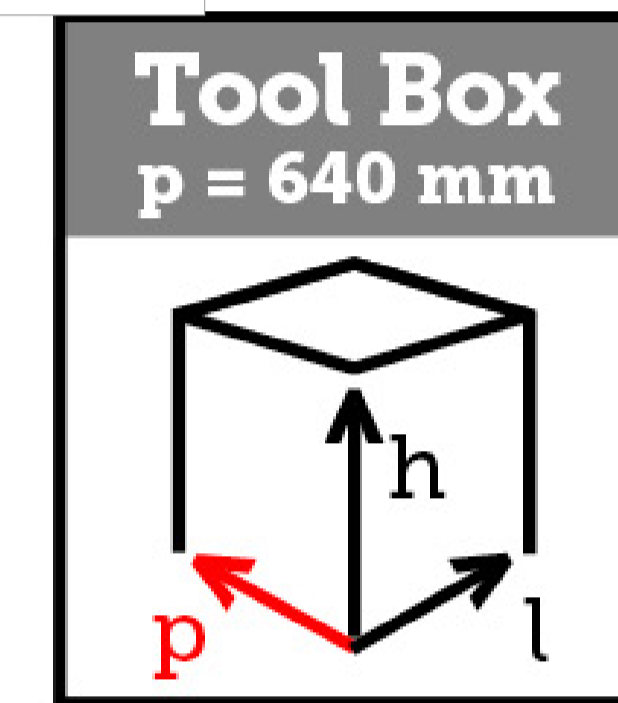
NOTE: The information and images - including the colors of the products - concerning equipment, external appearance, measurements, etc. are to be considered purely indicative and in no way binding.

TITAN reserves the right to change features, specifications, data, prices without notice. The prices indicated on the Site are in no way binding for contractual purposes and may vary according to the duration of the price list. Prices are always VAT free.

For updated and punctual information on products and prices, TITAN invites users to contact its sales network.

Steel rear tipper with retrocab storage box

H. 900 mm



Code	Boards	External Dimensions
M 155 025 460 - M30*	Fratted steel	3800x2300 mm

Steel sideboards from 500 mm top opening only

Steel tailgate from 500 mm with double opening and automatic release

- Loading deck structure in S355JR steel th. 4 mm
- Steel subframe
- Steel front board from 500 mm with ladder rack and perforated protection panel
- Steel Side and rear boards from 500 mm
- Front and rear pillars screwed and removable with integrated foldaway
- Recessed foldway rope stretching ring (4+4)
- Removable rear ladder rack
- Thermoplastic mudguards
- Tool box
- Homologated side guards
- 2 KGS powder fire extinguisher
- 2 wheel stop wedges with support
- Hydraulic system with P.T.O., safety fuse and buzzer
- Chromed and galvanised multistage under floor ram, wear resistant, weather resistant and rust resistant with safety valve
- Cataphoresis treatment and powder coating
- Lights and tables according to regulations

Supply and Mounting of retrocab storage box ext. dimensions 640x900x1950 mm of 2 mm width steel, painted with epoxy powder white ISUZU colour, plastic internal mat, aluminium hinges, central shelf bracket, double opening, locks euroinox.

*** Available while stocks last**

NOTE: The information and images - including the colors of the products - concerning equipment, external appearance, measurements, etc. are to be considered purely indicative and in no way binding.

TITAN reserves the right to change features, specifications, data, prices without notice. The prices indicated on the Site are in no way binding for contractual purposes and may vary according to the duration of the price list. Prices are always VAT free.

For updated and punctual information on products and prices, TITAN invites users to contact its sales network.

Steel rear tipper with FASSI F50A.0.23 crane



Code	Boards	External Dimensions
M 155 025 814 - M30*	Fratte steel	3800x2300 mm

Steel sideboards from 500 mm top opening only

Steel tailgate from 500 mm with double opening and automatic release



- Loading deck structure in S355JR steel th. 4 mm
- Steel subframe
- Steel front board from 500 mm with ladder rack and perforated protection panel
- Steel Side and rear boards from 500 mm
- Front and rear pillars screwed and removable with integrated foldaway
- Recessed foldway rope stretching ring (4+4)
- Removable rear ladder rack
- Thermoplastic mudguards
- Tool box
- Homologated side guards
- 2 KGS powder fire extinguisher
- 2 wheel stop wedges with support
- Hydraulic system with P.T.O., safety fuse and buzzer
- Chromed and galvanised multistage under floor ram, wear resistant, weather resistant and rust resistant with safety valve
- Cataphoresis treatment and powder coating
- Lights and tables according to regulations
- Supply and mounting of FASSI F50A.O.23 crane crane (3 hydraulic extensions)
- * Available while stocks last

NOTE: The information and images - including the colors of the products - concerning equipment, external appearance, measurements, etc. are to be considered purely indicative and in no way binding. TITAN reserves the right to change features, specifications, data, prices without notice. The prices indicated on the Site are in no way binding for contractual purposes and may vary according to the duration of the price list. Prices are always VAT free. For updated and punctual information on products and prices, TITAN invites users to contact its sales network.

Steel 3way tipper



Code	Boards	External Dimensions
M 155 022 454 - M30	Fratted steel	3800x2300 mm

Steel sideboards from 500 mm top opening only

Steel tailgate from 500 mm with double opening and automatic release

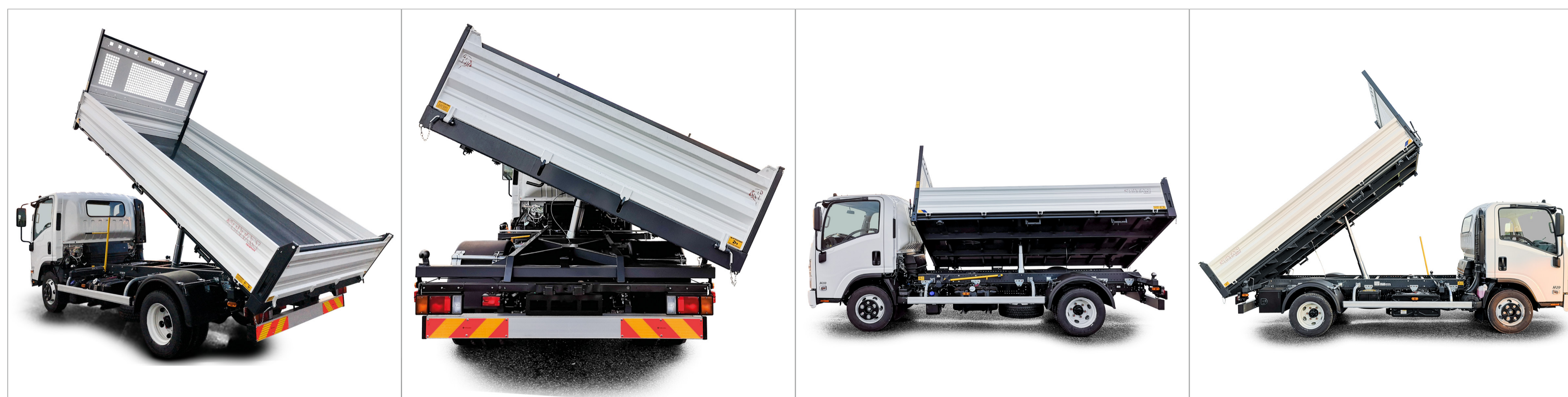
- Loading deck structure in S355JR steel th. 4 mm
- Steel subframe with horizontal spheres
- Steel front board from 500 mm with ladder rack and perforated protection panel
- Steel Side and rear boards from 500 mm in steel
- Front and rear pillars screwed and removable with integrated foldaway
- Recessed foldway rope stretching ring (4+4)
- Removable rear ladder rack
- Steel spheres supports with anti-vibration PVC cap
- Thermoplastic mudguards
- Tool box
- Homologated side guards
- 2 KGS powder fire extinguisher
- 2 wheel stop wedges with support
- Hydraulic system with P.T.O., safety fuse and buzzer
- Chromed and galvanised multistage under floor ram, wear resistant, weather resistant and rust resistant with safety valve
- Cataphoresis treatment and powder coating
- Lights and tables according to regulations



NOTE: The information and images - including the colors of the products - concerning equipment, external appearance, measurements, etc. are to be considered purely indicative and in no way binding.

TITAN reserves the right to change features, specifications, data, prices without notice. The prices indicated on the Site are in no way binding for contractual purposes and may vary according to the duration of the price list. Prices are always VAT free.

For updated and punctual information on products and prices, TITAN invites users to contact its sales network.



Steel 3way tipper

Code	Boards	External Dimensions
M 155 022 404 - M30*	Fratted steel	4200x2300 mm

Steel sideboards from 500 mm with both up and low opening

Steel tailgate from 500 mm with double opening and automatic release



- Loading deck structure in S355JR steel th. 4 mm
- Steel subframe
- Steel front board from 500 mm with ladder rack and perforated protection panel
- Side and rear boards from 500 mm in steel
- Front and rear pillars screwed and removable with integrated foldaway
- Recessed foldway rope stretching ring (4+4)
- Removable rear ladder rack
- Thermoplastic mudguards
- Tool box
- Homologated side guards
- 2 KGS powder fire extinguisher
- 2 wheel stop wedges with support
- Hydraulic system with P.T.O., safety fuse and buzzer
- Chromed and galvanised multistage under floor ram, wear resistant, weather resistant and rust resistant with safety valve
- Cataphoresis treatment and powder coating
- Lights and tables according to regulations
- * Available while stocks last

NOTE: The information and images - including the colors of the products - concerning equipment, external appearance, measurements, etc. are to be considered purely indicative and in no way binding.

TITAN reserves the right to change features, specifications, data, prices without notice. The prices indicated on the Site are in no way binding for contractual purposes and may vary according to the duration of the price list. Prices are always VAT free.

For updated and punctual information on products and prices, TITAN invites users to contact its sales network.

Steel 3way tipper with retrocab storage box

H. 1200 mm



Code	Boards	External Dimensions
M 155 022 577 - M30	Fratted steel	3800x2300 mm

Steel sideboards from 500 mm top opening only

Steel tailgate from 500 mm with double opening and automatic release

- Loading deck structure in S355JR steel th. 4 mm
- Steel subframe with horizontal spheres
- Steel front board from 500 mm with ladder rack and perforated protection panel
- Steel Side and rear boards from 500 mm in steel
- Front and rear pillars screwed and removable with integrated foldaway
- Recessed foldway rope stretching ring (4+4)
- Removable rear ladder rack
- Steel spheres supports with anti-vibration PVC cap
- Thermoplastic mudguards
- Tool box
- Homologated side guards
- 2 KGS powder fire extinguisher
- 2 wheel stop wedges with support
- Hydraulic system with P.T.O., safety fuse and buzzer
- Chromed and galvanised multistage under floor ram, wear resistant, weather resistant and rust resistant with safety valve
- Cataphoresis treatment and powder coating
- Lights and tables according to regulations

Supply and Mounting of retrocab storage box ext. dimensions 640x1200x1950 mm of 2 mm width steel, painted with epoxy powder white ISUZU colour, plastic internal mat, aluminium hinges, central shelf bracket, double opening, locks euroinox.



NOTE: The information and images - including the colors of the products - concerning equipment, external appearance, measurements, etc. are to be considered purely indicative and in no way binding.

TITAN reserves the right to change features, specifications, data, prices without notice. The prices indicated on the Site are in no way binding for contractual purposes and may vary according to the duration of the price list. Prices are always VAT free.

For updated and punctual information on products and prices, TITAN invites users to contact its sales network.

Steel 3way tipper with retrocab storage box

H. 900 mm



Code	Boards	External Dimensions
M 155 022 575 - M30*	Fratted steel	3800x2300 mm

Steel sideboards from 500 mm top opening only

Steel tailgate from 500 mm with double opening and automatic release

- Loading deck structure in S355JR steel th. 4 mm
- Steel subframe with horizontal spheres
- Steel front board from 500 mm with ladder rack and perforated protection panel
- Side and rear boards from 500 mm in steel
- Front and rear pillars screwed and removable with integrated foldaway
- Recessed foldway rope stretching ring (4+4)
- Removable rear ladder rack
- Steel spheres supports with anti-vibration PVC cap
- Thermoplastic mudguards
- Tool box
- Homologated side guards
- 2 KGS powder fire extinguisher
- 2 wheel stop wedges with support
- Hydraulic system with P.T.O., safety fuse and buzzer
- Chromed and galvanised multistage under floor ram, wear resistant, weather resistant and rust resistant with safety valve
- Cataphoresis treatment and powder coating
- Lights and tables according to regulations

Supply and Mounting of retrocab storage box ext. dimensions 640x900x1950 mm of 2 mm width steel, painted with epoxy powder white ISUZU colour, plastic internal mat, aluminium hinges, central shelf bracket, double opening, locks euroinox.

*** Available while stocks last**

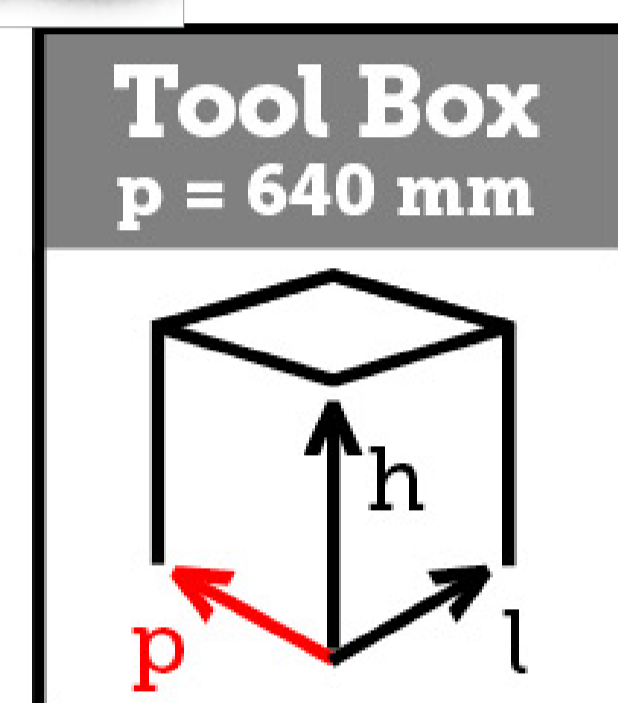


NOTE: The information and images - including the colors of the products - concerning equipment, external appearance, measurements, etc. are to be considered purely indicative and in no way binding.

TITAN reserves the right to change features, specifications, data, prices without notice. The prices indicated on the Site are in no way binding for contractual purposes and may vary according to the duration of the price list. Prices are always VAT free.

For updated and punctual information on products and prices, TITAN invites users to contact its sales network.

Steel 3way tipper with retrocab storage box H. 1200 mm



Code	Boards	External Dimensions
M 155 022 569 - M30*	Fratted steel	4200x2300 mm

Steel sideboards from 500 mm with both up and low opening

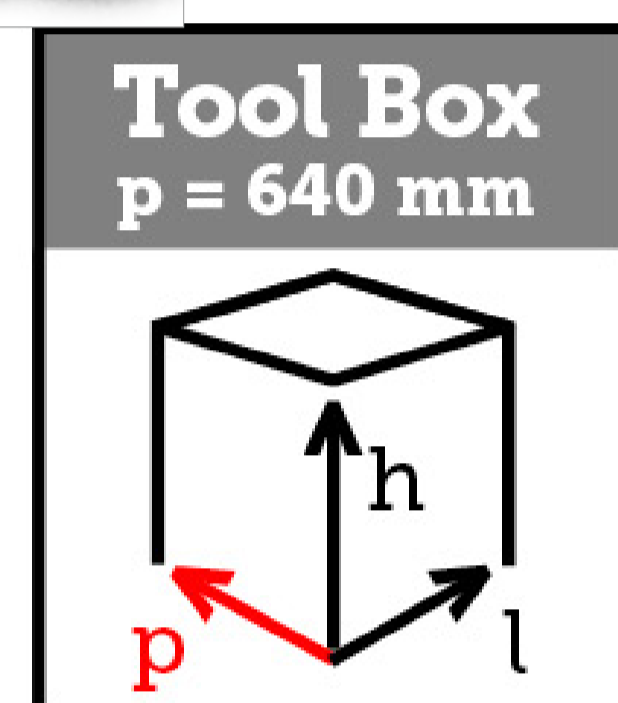
Steel tailgate from 500 mm with double opening and automatic release

- Loading deck structure in S355JR steel th. 4 mm
- Steel subframe
- Steel front board from 500 mm with ladder rack and perforated protection panel
- Steel Side and rear boards from 500 mm in steel
- Front and rear pillars screwed and removable with integrated foldaway
- Recessed foldway rope stretching ring (4+4)
- Removable rear ladder rack
- Thermoplastic mudguards
- Tool box
- Homologated side guards
- 2 KGS powder fire extinguisher
- 2 wheel stop wedges with support
- Hydraulic system with P.T.O., safety fuse and buzzer
- Chromed and galvanised multistage under floor ram, wear resistant, weather resistant and rust resistant with safety valve
- Cataphoresis treatment and powder coating
- Lights and tables according to regulations

Supply and Mounting of retrocab storage box ext. dimensions 640x1200x1950 mm of 2 mm width steel, painted with epoxy powder white ISUZU colour, plastic internal mat, aluminium hinges, central shelf bracket, double opening, locks euroinox.

*** Available while stocks last**

Steel 3way tipper with retrocab storage box H. 900 mm



Code	Boards	External Dimensions
M 155 022 567 - M30*	Fratted steel	4200x2300 mm

Steel sideboards from 500 mm with both up and low opening

Steel tailgate from 500 mm with double opening and automatic release

- Loading deck structure in S355JR steel th. 4 mm
- Steel subframe
- Steel front board from 500 mm with ladder rack and perforated protection panel
- Side and rear boards from 500 mm in steel
- Front and rear pillars screwed and removable with integrated foldaway
- Recessed foldway rope stretching ring (4+4)
- Removable rear ladder rack
- Thermoplastic mudguards
- Tool box
- Homologated side guards
- 2 KGS powder fire extinguisher
- 2 wheel stop wedges with support
- Hydraulic system with P.T.O., safety fuse and buzzer
- Chromed and galvanised multistage under floor ram, wear resistant, weather resistant and rust resistant with safety valve
- Cataphoresis treatment and powder coating
- Lights and tables according to regulations

Supply and Mounting of retrocab storage box ext. dimensions 640x900x1950 mm of 2 mm width steel, painted with epoxy powder white ISUZU colour, plastic internal mat, aluminium hinges, central shelf bracket, double opening, locks euroinox.

*** Available while stocks last**

NOTE: The information and images - including the colors of the products - concerning equipment, external appearance, measurements, etc. are to be considered purely indicative and in no way binding.

TITAN reserves the right to change features, specifications, data, prices without notice. The prices indicated on the Site are in no way binding for contractual purposes and may vary according to the duration of the price list. Prices are always VAT free.

For updated and punctual information on products and prices, TITAN invites users to contact its sales network.

Steel 3way tipper with FASSI F50A.0.23 crane



Code	Boards	External Dimensions
M 155 023 413 - M30	Fratted steel	3800x2300 mm

Steel sideboards from 500 mm top opening only

Steel tailgate from 500 mm with double opening and automatic release

- Loading deck structure in S355JR steel th. 4 mm
- Steel subframe with horizontal spheres
- Steel front board from 500 mm with ladder rack and perforated protection panel
- Side and rear boards from 500 mm in steel
- Front and rear pillars screwed and removable with integrated foldaway
- Recessed foldway rope stretching ring (4+4)
- Removable rear ladder rack
- Steel spheres supports with anti-vibration PVC cap
- Thermoplastic mudguards
- Tool box
- Homologated side guards
- 2 KGS powder fire extinguisher
- 2 wheel stop wedges with support
- Hydraulic system with P.T.O., safety fuse and buzzer
- Chromed and galvanised multistage under floor ram, wear resistant, weather resistant and rust resistant with safety valve
- Cataphoresis treatment and powder coating
- Lights and tables according to regulations

Supply and mounting of FASSI F50A.O.23 crane (3 hydraulic extensions)



NOTE: The information and images - including the colors of the products - concerning equipment, external appearance, measurements, etc. are to be considered purely indicative and in no way binding.
TITAN reserves the right to change features, specifications, data, prices without notice. The prices indicated on the Site are in no way binding for contractual purposes and may vary according to the duration of the price list. Prices are always VAT free.
For updated and punctual information on products and prices, TITAN invites users to contact its sales network.



**Double
Rails**
850 - 1060



Hooklift Guima-Palfinger T05 double rails with stabilizer roller

Code

M 155 070 071 - M30

Equipment length = 3300 mm

Width of rails double = 850 - 1060 mm

Height of hook = 920 mm

Stabilizer Roll

Container length (without anchor hook) = 3500 mm

STANDARD EQUIPMENT:

- Oil tank
- Control panel into cab
- Thermoplastic mudguards
- Tool box
- Adjustable rear work light
- Signaling devices compliant with the highway code
- Homologated side guards
- 2 KGS powder fire extinguisher in the cabin
- 2 wheel stop wedges with support
- Stabilizer roller
- Hydraulic system with P.T.O., safety fuse and buzzer
- CE certificate of conformity
- Lights according to regulations

NOTE: The information and images - including the colors of the products - concerning equipment, external appearance, measurements, etc. are to be considered purely indicative and in no way binding.

TITAN reserves the right to change features, specifications, data, prices without notice. The prices indicated on the Site are in no way binding for contractual purposes and may vary according to the duration of the price list. Prices are always VAT free.

For updated and punctual information on products and prices, TITAN invites users to contact its sales network.

Hooklift Guima-Palfinger T05 double rails



**Double
Rails**
850 - 1060



Code
M 155 070 056 - M30
Equipment length = 3600 mm
Width of rails double = 850 - 1060 mm
Height of hook = 920 mm
Container length (without anchor hook) = 3800 mm

STANDARD EQUIPMENT:

- Oil tank
- Control panel into cab
- Thermoplastic mudguards
- Tool box
- Adjustable rear work light
- Signaling devices compliant with the highway code
- Homologated side guards
- 2 KGS powder fire extinguisher in the cabin
- 2 wheel stop wedges with support
- Hydraulic system with P.T.O., safety fuse and buzzer
- CE certificate of conformity
- Lights according to regulations